

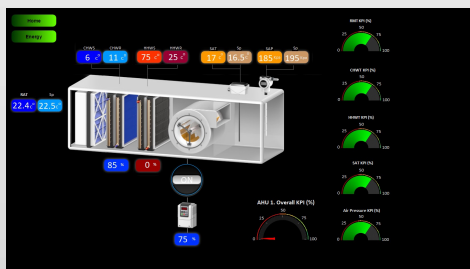
AIRTEK® Building Automation Controllers

Airtek build cost effective, powerful Hardware with the internal capacity to be capable of calculating KPI (Key Performance Indicators) within themselves eliminating the need for expensive cloud base solutions and ongoing associated costs. Advantages of containing all the data locally means there are no setup fee's or cloud based usage costs. There are no issues with connectivity problems and data loss. No high ISP data usage or charges.



Web based controllers.

These controllers can present the calculated KPI data in any web browser, this makes site evaluation for maintenance and service personnel self explanatory.



Each piece of equipment can be continually monitored and controlled for maximum efficiency with a constant visual KPI reporting spelling out the reason for any poor performing equipment.

POWERFUL PROGRAMMING

Airtek 32 bit controllers have large memory capacity and many prebuilt algorithms for smart analytical results that are meaningful to the user.

```

//Check communications 2003
Bv101 = Cycle( 50, 50, 1, 1)
D2003Bv101 = Bv101
OneShot
Av100 = IChange( D2003Bv101, 0.5)
Bv103 = Compare( Av100, 100, 0, 5)

//Min Run Timer*/
//Counter
Av4 = Bv2 + Av4
Switch
Av6 = Av4 / 60
Bv6 = OneShot( @Bv99)
Av4 = GatedTransfer( 0, Bv6 )
//Check if run time is less than Sp
@Bv3 = Compare( Av6, Av5, 0, 0.1)
//Run if schedule ON & Not Min run time
Bv4 = Switch( Bv3, 1, Bv3 )
Bv4 = Switch( Bv99, Bv6, 0 )

//Co x 7 sensors*/
//program
Bv99 = Switch( Bv98, Null, 0 )
Av12 = Limit( Av12, 1, Av13 )
Av13 = Limit( Av13, Av12, 50)
HLSelect( Av20, Av22, Av24, Av26, Av28, Av30, Null, Av3)
HLSelect( Av3, Av32, Null, Null, Null, Null, Av3)
//Faulty Sensor
@Bv14 = Within( Av20, -1, 201)
@Bv15 = Within( Av22, -1, 201)
@Bv16 = Within( Av24, -1, 201)
@Bv17 = Within( Av26, -1, 201)
@Bv18 = Within( Av28, -1, 201)
@Bv19 = Within( Av30, -1, 201)
@Bv20 = Within( Av32, -1, 201)
//H Level Alarm
Bv45 = Compare( Av20, Av13, Av2, 0 )
Bv46 = Compare( Av22, Av13, Av2, 0 )
Bv47 = Compare( Av24, Av13, Av2, 0 )
Bv48 = Compare( Av26, Av13, Av2, 0 )
Bv49 = Compare( Av28, Av13, Av2, 0 )
    
```

WHY OTHERS USE CLOUD BASED

The general trend today is cloud based software that collects information to analyse and then report the findings in a useful format. The reason for this trend is that other manufacturers produce cheap hardware that are limited in their processing power and therefore are unable to carry out complicated mathematical processes on site. To get around this issue others need to use additional software applications which are generally expensive and costly to maintain.

Please contact us or one of our Dealers or Integrators for further information.