

Executes equipment

NAFA.-08

ON-OFF spring return electric damper actuator

[Description]

This is a small electric damper actuator. Normally be used for variable air flow control device of cooling, heating, ventilation or the ventilation of an industrial process. It may also work with the other devices to control temperature, humidity or pressure.

[Features]

The electric damper actuator NAFA.. series combines a "gear box", "holder" and "electric control circuit" to be an actuator. It has the following features.

- ON-OFF, 3 points floating control.
- This series has 8Nm torque, adapts to small damper.
- Lock to the rotate bar.
- Round: ϕ 8~21mm, Square: 5~12mm.
- One SPDT dry contact can set position switch.
- CW or CCW motor directional control.
- Save energy when stop. Runs at low-noise.
- Manual operation and setting the rotate angle.
- Damper position display.



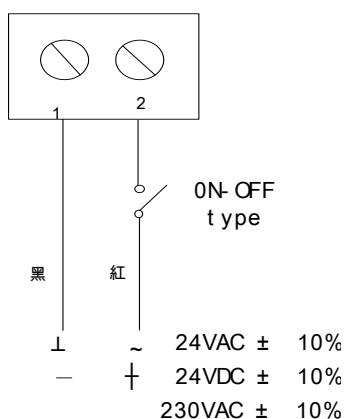
[Specification]

Model	Torque	Damper size	Action time	Return Time	Power supply	Power consumption	Capacity	Weight
NAFA 1-08	8 Nm	1.5 m ²	70 Sec.	< 25 Sec.	24VAC/DC	Running:7.0W,Stop:2.0W	0 VA	2.2Kg
NAFA 1-08S	8 Nm	1.5 m ²	70 Sec.	< 25 Sec.	24VAC/DC	Running:7.0W,Stop:2.0W	0 VA	2.2Kg
NAFA 2-08	8 Nm	1.5 m ²	70 Sec.	< 25 Sec.	230±10VAC	Running:8.0W,Stop:5.5W	0 VA	2.3Kg
NAFA 2-08S	8 Nm	1.5 m ²	70 Sec.	< 25 Sec.	220±10VAC	Running:8.0W,Stop:5.5W	0 VA	2.3Kg

Note: (S) means the model has a assist contact switch.

Power Frequency	: 50~60HZ
Control signal	: ON- OFF, 2 points spring return type
Assists Contact	: One SPDT contact for model with (S)
Contact Capacity	: 3A (1.5A) ,220 VAC
Rotation Angle	: -5 to 90°
Rotator Size	: Rotund: ϕ 8~21mm, square: 5~12mm.
Appearance	: ABS plastic (light blue)
Protect grade	: IP54
Operation Temperature	: -20°C~ 50°C
Operation Humidity	: 5~95 % RH
Noise	: 45dB
Certificate	: Accord with CE Certification

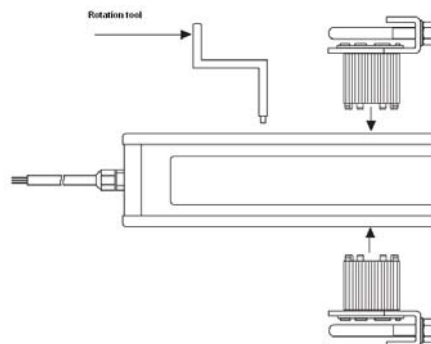
[Wiring]



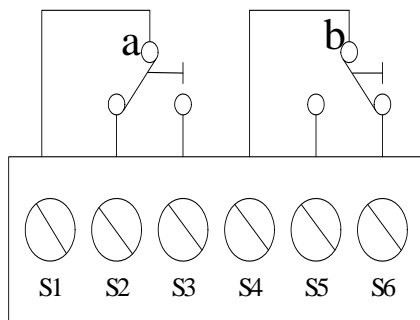
Rotate Direction:

Change rotate direction by plug in the rotator from the opposite direction

Default direction is CW



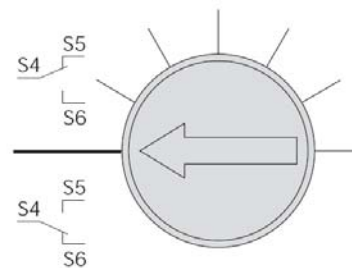
[Auxiliary switches] model with S1



3(1.5) A 230VAC
Not or position at 0°

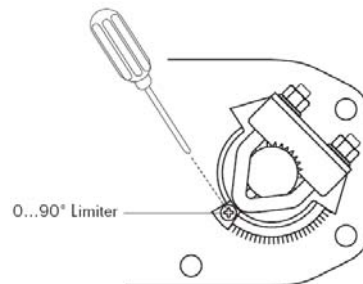
Assists position
switch adjustment

Turn the auxiliary
switch to its setting
position if necessary

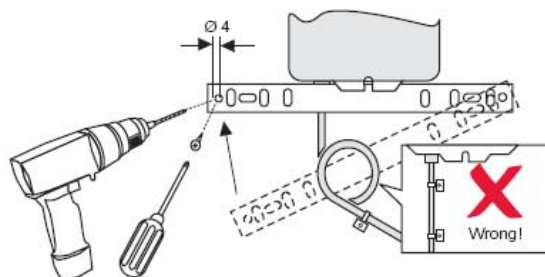
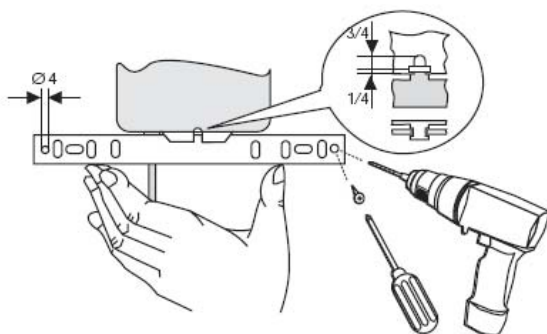


Angle stopper:

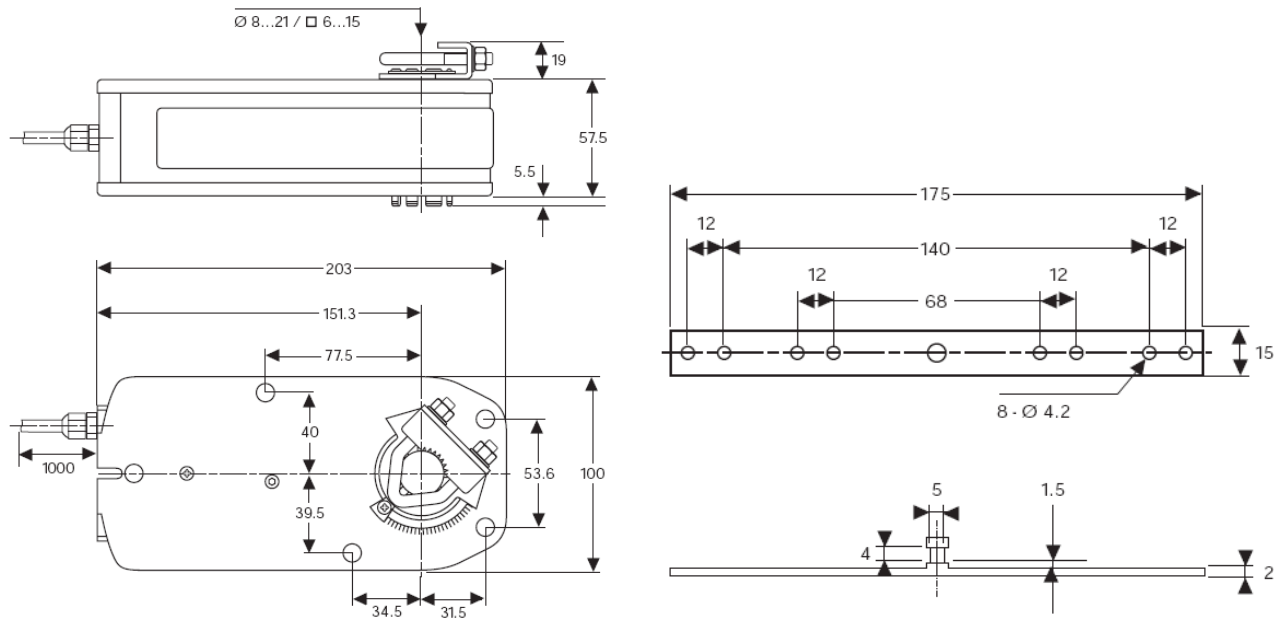
Adjust the screw stopper.
1. Release both stopping
screws
2. Move to proper position
3. Locks tight both screws



【Installation】



[Dimension] unit: mm



Above information is for this product. We reserve the right to alter this information without notice

Please refer to <http://www.airtek.com.au> for the most recent updated information.