

LCD Touch Screen Control Panel

【 Description 】

DST35U LCD touch screen control panel is designed to work with Airtek controllers by connecting to its MSnet MODBUS port. User can use the backlight LCD graphic touch screen to read or write control points of a controller. It has four function keys (⚙️ + F1 + F2 + F3) available for users to set up quick access to selected pages. The panel uses a 32-bit microprocessor. Display pages are edited on the Airtek BACsoft software. BACsoft is the main software of the Airtek BMS system. DST35U display English and Chinese characters. It is a working site system control and monitor tool.



【 Features 】

- 32 bit microprocessor.
- Good for wall mount or installed in front of a control panel.
- MODBUS communication. Connect to the MSnet port of an AIRTEK controller as a human machine interface.
- 3.5" screen, 65,535 colors, touch screen TFT LCD, 320*240 pixel, setup with AIRTEK BACsoft software.
- Selectable simplified Chinese, Traditional Chinese, and English, UTF-8 fonts, simplified and traditional Chinese can be display in the same screen graphic.
- Four ⚙️ + F1 + F2 + F3 function keys, ⚙️ is system setup key. F1, F2, and F3 can be setup as function keys for switch display pages.
- Update firmware and upload graphic pages by using a Micro USB cable.
- 6M Bytes fonts and graphic memory. It can hold up to 25 pages display graphic. Actual pages depend on data size.
- Read/Write Present Value and Priority Array of AI/AO/AV/BI/BO/BV of the controller it attached.
- It display alarm and keep the most recent 80 alarms, if the controller (DAC, WC, or GC-DB) it attached receive an alarm notification.
- 10 password levels. User can setup up to 20 passwords.
- Plug and play. Good for site testing.

【 Specification 】

Power Supply	: 24VAC/VDC, 5VA (Do not use the 24VDC provided by a DDC. It does not have enough watt)
LCD Display	: 3.5", 65,535 color, touch screen TFT LCD, 320*240 pixels.
Microprocessor	: 32 bit microprocessor, 64K RAM, 384K Flash memory, 8M memory for fonts and user information.
MSnet Network	: A standard RS-485 MODBUS RTU port. Max. 1200M.
USB Port	: A micro USB for upload firmware and information.
Clock	: A gold capacitor to run clock for 48 hours after power interrupted.
Keys	: Four function keys ⚙️ + F1 + F2 + F3. ⚙️ is system setting key. F1, F2, and F3 are function keys.
Buzzer	: One buzzer
Environment	: 0~70°C, 0~95%RH non-condense.
Certificate	: EMC Directive 89/336/EEC (European CE Mark).
BTL List	BACnet B-OD
Setup Cable	
HMI-LINKER	: USB Setting cable

【 Installation 】

- For wall mounted, the double gang back box should be selected for enough wiring space.
- Lock the fixed sheet iron by the screw then installs the controller and pushes down to fix it. Uninstall it by reverse process.
- Use the AWG22 shield cable and EMT to obtain good control effect.
- An independent 24VAC power supply is required for this device. This power supply should not share with other devices.
- Setup, upload firmware, and upload graphic display by using the BACsoft software and connect PC to DST35U with USB2.0 to Mini USB cable (see Fig. 2).
- Pay attention to avoid dust, condensate environment element to prevent product damage.

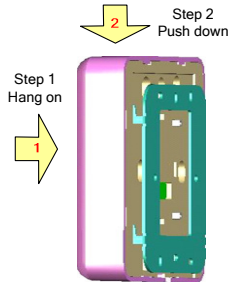


Fig. 1 Installation

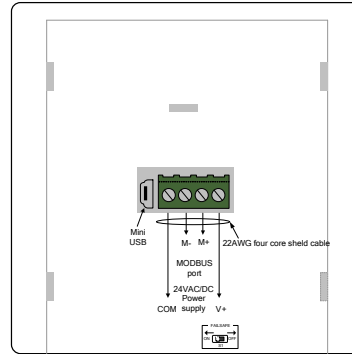
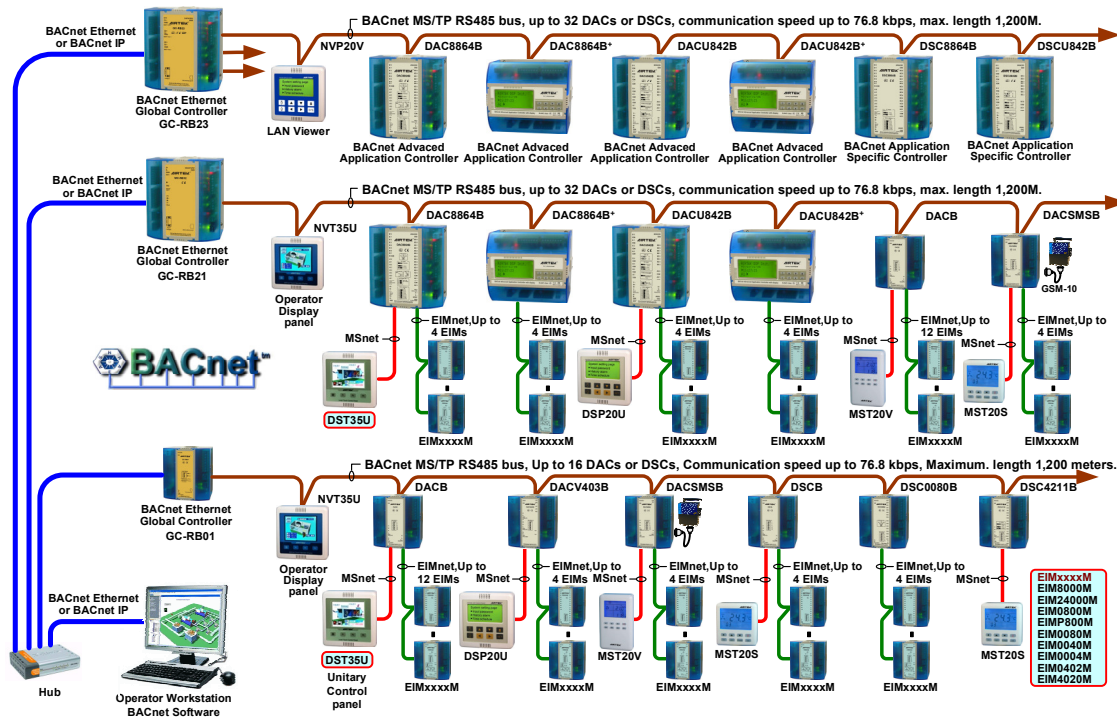


Fig. 2 DST35U Port

【 Network 】



【 Dimension 】 Unit: mm

