

## LCD Control Panel

### 【 Description 】

DSP20U LCD control panel works with MSnet port of DAC controllers. Its LCD back-light panel monitors status of control points and let user enter set values for temperature, humidity etc. Eight control buttons for users operation. Display of DSP20U is user programmable. This panel is benefit for user to do local control and monitor.

### 【 Features 】

- 32 bit high speed microprocessor
- Separate from controller. Easy installation for both of indoor wall or panel mounted.
- Mono 144\*64 LCD with 4 lines English or Chinese display, each line displays 18 English or 9 Chinese characters. LED with back light.
- MODBUS connect to AIRTEK DAC BACnet AAC controller for local control of a controller.
- Can editor multiple pages with each page up to 64 points, can read or write Present Value AI/AO/AV/BI/BO/BV and Priority Array of a device.
- Online edit display pages of DSP20U by BACsoft.
- Selectable build in active icons.
- 8 operation keys.
- A setting page for user to change default setting of the panel.
- When connect DSP20U or DSP21H to DAC, WC, GC-DB controllers, DSP20U or DSP21H can receive and display alarm of the controller it connected. It will keep 20 most recent alarms in record.
- 5VDC power supply from DAC directly.
- RS485 MODBUS RTU
- Password to avoid unauthorized operation
- Plug and play.
- Function of DSP21H is the same as a DSP20U, but DSP21H is on the cover of DAC.

### 【 Specification 】

Power Supply : 5VDC input, 5VA

LCD Display : Mono 144\*64 LCD with 4 lines English or Chinese display, each line displays 18 English or 9 Chinese characters. LED with back light.

Microprocessor : 32 bit high speed microprocessor

Press Keys : 8 keys

Network : One RS-485 MODBUS RTU port.

Environment : 0~70℃ , 0~95%RH non-condensing



## 【 Installation 】

- For wall mounted, the double gang back box should be selected for enough wiring space.
- Lock the fixed sheet iron by the screw then installs the controller and pushes down to fix it. Uninstall it by reverse process.
- Uses the AWG22 shield cable and EMT to obtain good control effect.
- Power supply from DAC it attached. Follow wire connection order.
- Pay attention to avoid dust, condensate environment element to prevent product damage.

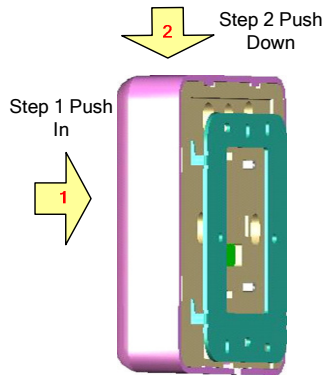


Fig. 1 DSP20U installation

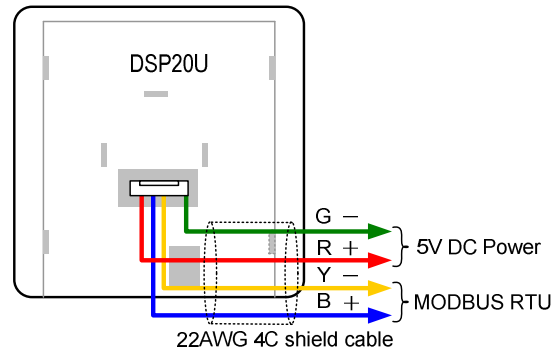
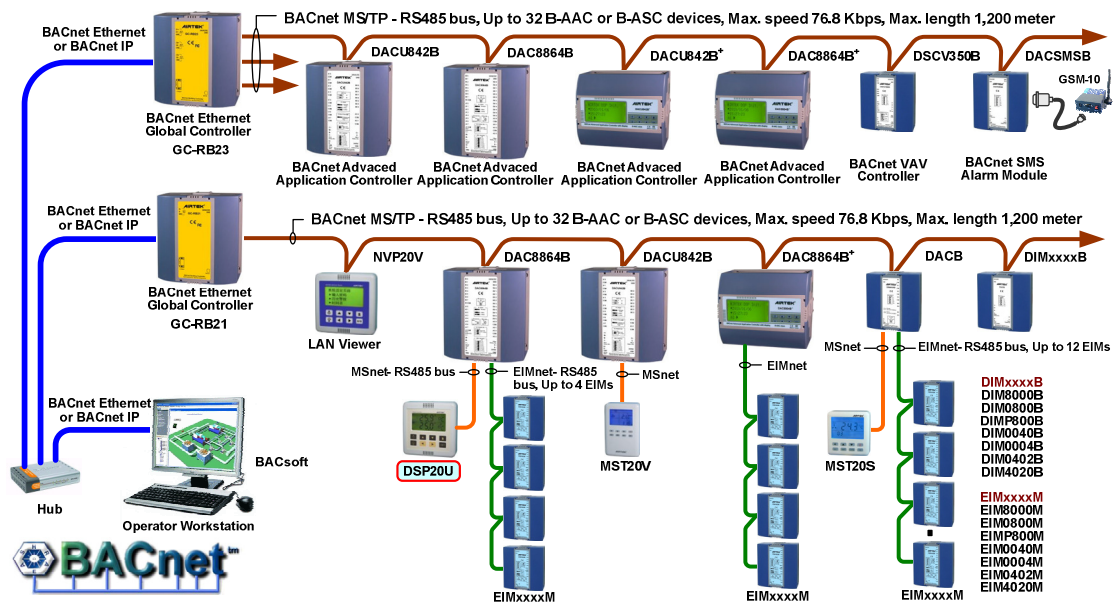


Fig. 2 DSP20U and DAC wiring

## 【 Network 】



## 【 Dimension 】 Unit: mm

